

UNLEASHED

A STUDY OF ACTS

Week 29

Paul Arrested in Jerusalem

Sermon Notes

Keith Comp, Senior Minister

Acts 21:15-23:35

I. Paul's Arrival at Jerusalem - Acts 21:17-23a

II. Paul's Arrest and Defense - Acts 21:27-23:11

III. Paul's Journey towards Rome - Acts 23:12-35

What can we learn from Paul when it comes to sharing our faith with others?

1) Build _____ instead of _____

2) Learn to _____ the _____

3) _____ you - wherever you are

UNLEASHED

A STUDY OF ACTS

Week 29

Paul Arrested in Jerusalem

Sermon Notes

Keith Comp, Senior Minister

Acts 21:15-23:35

I. Paul's Arrival at Jerusalem - Acts 21:17-23a

II. Paul's Arrest and Defense - Acts 21:27-23:11

III. Paul's Journey towards Rome - Acts 23:12-35

What can we learn from Paul when it comes to sharing our faith with others?

1) Build _____ instead of _____

2) Learn to _____ the _____

3) _____ you - wherever you are

May 1, 2022

8:30 AM | Worship Service
wentzvilleKidz | Birth-5th grade

9:45 AM | Worship Service
wentzvilleKidz | Birth-5th grade
6-8th Grade Worship | Student Room

11:00 AM | Worship Service
wentzvilleKidz | Birth-5th grade
6-8th grade | Bible Study in room 201

WentzvilleKidz VIP | Staffed in-class
helpers for children with special needs
birth-5th grade - schedule in advance

CONNECTION CARD | We would like
for everyone to fill out a card each
week and place it in the plate on the
communion table or fill it out online
at wentzvillecc.org.

FIRST TIME VISITORS | We're so glad
you're here! We have a gift for you at
the Connection Counter. Stop by after
the service to pick it up!

MOTHER'S ROOM | Located to the
left of the office.

PRAYER TIME | At the end of service,
our prayer team is available on the
far left side of the auditorium.
They would love to pray with you
or discuss baptism and membership.

COMMUNION | Open to all believers
in Christ (*Gluten-free communion bread
available at Connection Counter.*)



Reservations Required
wentzvillecc.org/seussical
Help welcome thousands of people to our
campus by being a Musical Greeter.
Please sign up on the Connection Card.



NEXT STEPS CLASS
Learn about WCC BELIEFS,
BAPTISM, & MEMBERSHIP

MAY 15
DURING 9:45 SERVICE

Sign Up at wentzvillecc.org/nextsteps



Last Weekend | Onsite Attendance: **785** | Giving: **\$37,309**
New Members: Lori Heiser
Office | 636.327.6622 wentzvillecc.org
Pastoral Care | 636.336.6862 info@wentzvillecc.org

May 1, 2022

8:30 AM | Worship Service
wentzvilleKidz | Birth-5th grade

9:45 AM | Worship Service
wentzvilleKidz | Birth-5th grade
6-8th Grade Worship | Student Room

11:00 AM | Worship Service
wentzvilleKidz | Birth-5th grade
6-8th grade | Bible Study in room 201

WentzvilleKidz VIP | Staffed in-class
helpers for children with special needs
birth-5th grade - schedule in advance

CONNECTION CARD | We would like
for everyone to fill out a card each
week and place it in the plate on the
communion table or fill it out online
at wentzvillecc.org.

FIRST TIME VISITORS | We're so glad
you're here! We have a gift for you at
the Connection Counter. Stop by after
the service to pick it up!

MOTHER'S ROOM | Located to the
left of the office.

PRAYER TIME | At the end of service,
our prayer team is available on the
far left side of the auditorium.
They would love to pray with you
or discuss baptism and membership.

COMMUNION | Open to all believers
in Christ (*Gluten-free communion bread
available at Connection Counter.*)



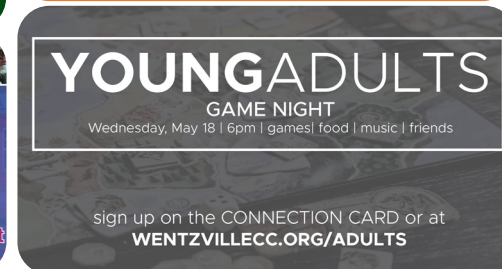
Reservations Required
wentzvillecc.org/seussical
Help welcome thousands of people to our
campus by being a Musical Greeter.
Please sign up on the Connection Card.



NEXT STEPS CLASS
Learn about WCC BELIEFS,
BAPTISM, & MEMBERSHIP

MAY 15
DURING 9:45 SERVICE

Sign Up at wentzvillecc.org/nextsteps



Last Weekend | Onsite Attendance: **785** | Giving: **\$37,309**
New Members: Lori Heiser
Office | 636.327.6622 wentzvillecc.org
Pastoral Care | 636.336.6862 info@wentzvillecc.org